



Shropshire Integrated Place Partnership

HWBB Update March 2022





Supported by Population Health Management, Digital Infrastructure, Voluntary and Community Sector and Engagement



Priorities

HWBB Key Focus:

- Children's and Young People's Strategy
- Prevention/Healthy Lifestyles/Healthy Weight
- Mental Health
- Workforce
- Community Capacity & Resilience with the VCSE
- Local Care and Personalisation (incl. involvement)
- Supporting Primary Care Networks
- Integration and One Public Estate

Programmes and subgroups

- HWBB Priority groups – CYP, Mental Health, Boards
- Healthy Lives / Prevention (subgroup)
- Local Care Programme including:
 - Case management /Rapid Response/ Respiratory
 - Community Services review
 - Personalisation groups
- UEC (alternatives to hospital)
- Joint Strategic Needs Assessment & Community and Rural Strategy

Priorities and Terms of Reference

Priorities

- In line with the HWBB priorities and ICS priorities
- Will reviewed following the approval of the Health and Wellbeing Strategy

Terms of Reference

- Terms of reference were agreed in May 2021 and amended in February 2022; provides focus for working collaboratively across commissioners and providers
- ToR to be updated in line with developing ICS and emerging guidance for place based working



Local Care - Rapid Response

- Based on the successful Rapid Response provision in Telford and Wrekin a pilot service in was trialled in Shrewsbury with Winter 2020-21 funding.
- This demonstrated the need to for an aligned Rapid Response offer across Shropshire, Telford and Wrekin and funding was secured as part of the Alternatives To Hospital Admission (A2HA) investment case.
- The funding enables;
 - Enhancement of the model in Telford and Wrekin
 - Roll out of the Rapid Response model of care across Shropshire which includes:
 - A crisis response (within 2 hours) from a multi-disciplinary health and social care team
 - Supporting people with an urgent care need to remain well/ recover in their usual place of residence and avoid hospital admission
- The projects have been implemented through SY1-3 and SY4/5 in January 2022; will roll out to North East and West of the county spring 2022 and the SW in June.



Personalisation

Workstream Priority	Update
Respiratory and Asthma Care and Support	<p>Asthma - A band 6 Asthma Nurse resource will be appointed to work with GP Practices to identify CYP with an asthma diagnosis who require an Asthma Management Review, the service will prioritise areas of high deprivation to offer out appointments.</p>
CYP Mental Health •Eating Disorders •Children with Complex MH needs on DSR	<p>An Asthma App will be offered as a personalised tool to enable CYP to self-manage their Asthma symptoms. The 'Digital Health Passport' app has been codesigned nationally by the supplier with CYP suffering with Asthma, and feedback has been received from our local school nursing service, Shropshire Community Health Trust and GPs</p> <p>Expressions of Interest are currently being offered out across the creative communities to access grant funding for activities such as yoga, swimming, or singing which help manage the symptoms of breathlessness.</p> <p>Mental Health - Expressions of Interest are currently being offered out across the creative communities to access grant funding for activities which help manage the symptoms mental health issues.</p> <p>Coproduction – CYP booklet for eating disorders, social prescribing personal care and support plans, expressions of interest for additional activity</p> <p>Dynamic support register – a proposal for community navigator role being developed with PACC and PODs</p>
Workforce Development	<p>Personalisation Programme is currently working with leads across STW CCG to facilitate access to training and development opportunities in the following areas; Maternity, Cancer, Voluntary Sector and Social Care, Health Inequalities, Personal Health Budgets</p>
Cross cutting work	<p>Shropshire and Telford and Wrekin's Health and Wellbeing Strategies, Inequalities strategies TWIPP / SHIPP</p>



Prevention and Social Prescribing



Total Referrals

1473

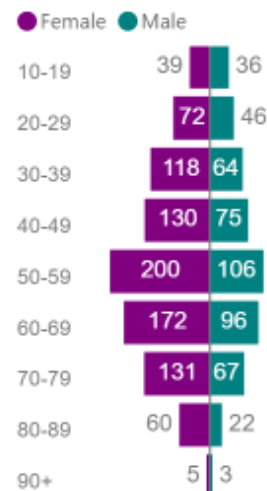
Ref. Date

01/04/2021

28/02/2022



Referrals by Week



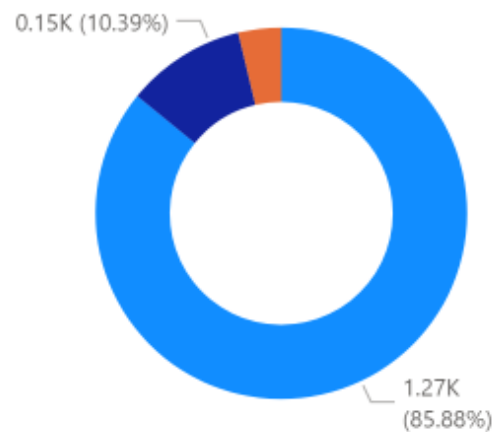
Age

- 10-19
- 20-29
- 30-39
- 40-49
- 50-59
- 60-69

Gender

- Female
- Male
- Unspecif...

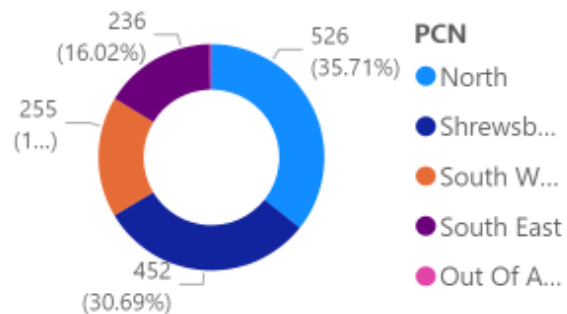
Referrals by Type



IdentifiedByPractice

- Yes - Opportunistic
- No
- Yes - Systematic

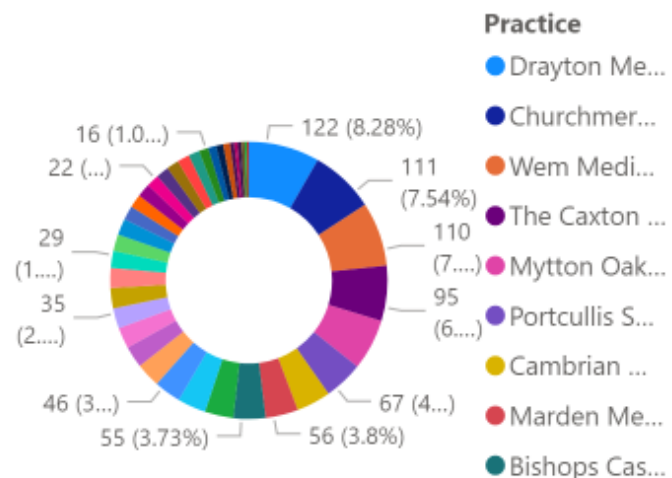
Referrals by PCN



PCN

- North
- Shrewsb...
- South W...
- South East
- Out Of A...

Referrals by Practice



Practice

- Drayton Me...
- Churchmer...
- Wem Medi...
- The Caxton ...
- Mytton Oak...
- Portcullis S...
- Cambrian ...
- Marden Me...
- Bishops Cas...

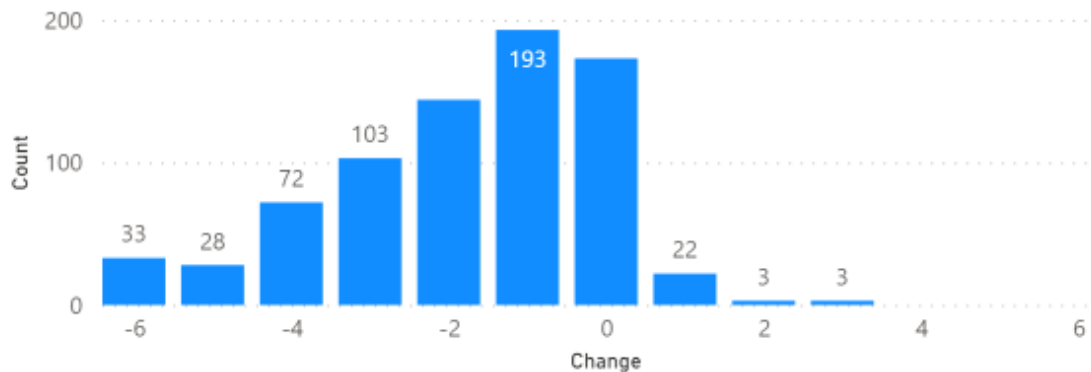
PCN

- North
- Out Of ...
- Shrewsb...
- South E...
- South W...

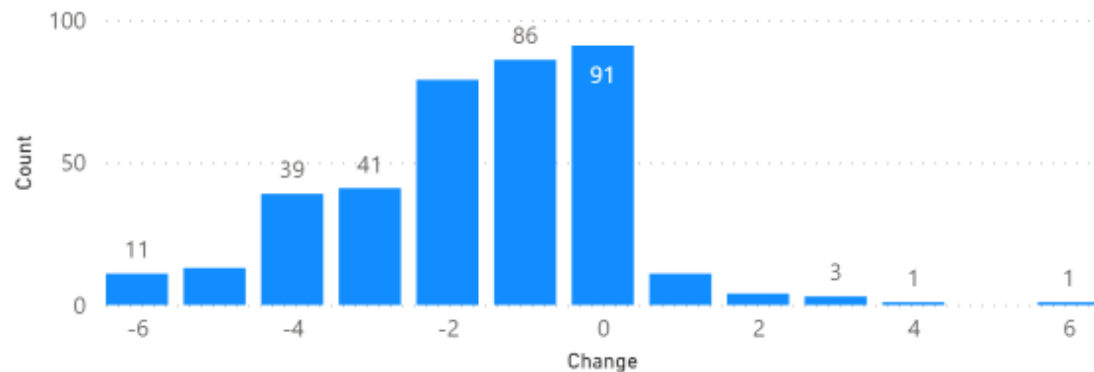
Practice

- Albright...
- Alveley ...
- Beeches ...
- Belvider...
- Bishops ...
- Bridgnor...
- Broselev...

Concern 1 MYCaW Change (Reduction is good)



Concern 2 MYCaW Change (Reduction is good)



Baseline Da...

23/05/2017

07/02/2022



Age

- 10-19
- 20-29
- 30-39
- 40-49
- 50-59
- 60-69
- 70-79

Gender

- Female
- Male
- Unspecif...

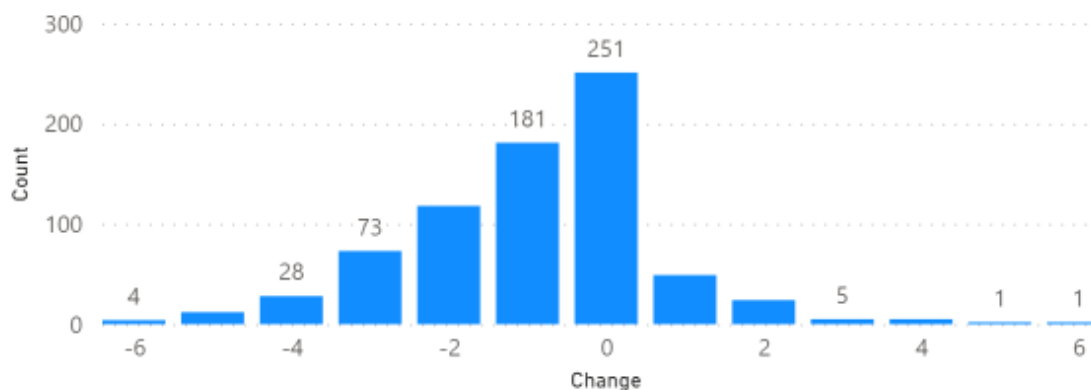
PCN

- North
- Out of A...
- Shrewsb...
- South E...
- South W...

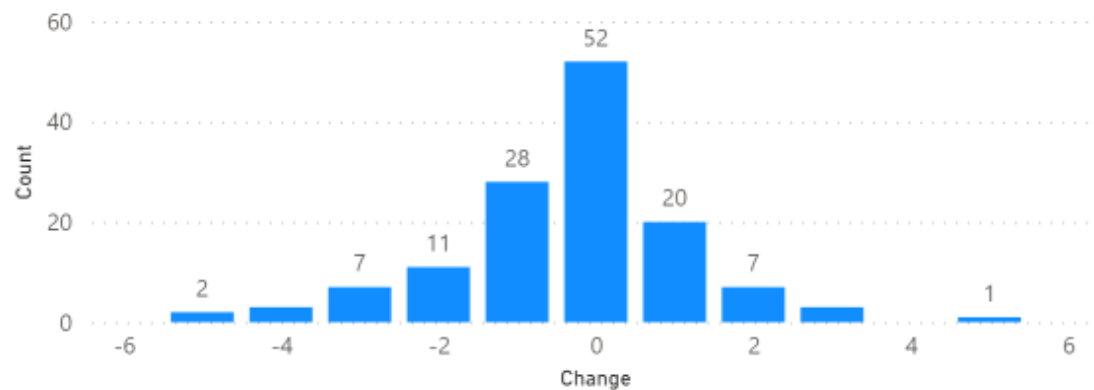
Practice

- Albright...
- Alveley ...
- Beeches ...
- Belvider...
- Bishops ...
- Bridgnor...
- Broselev...

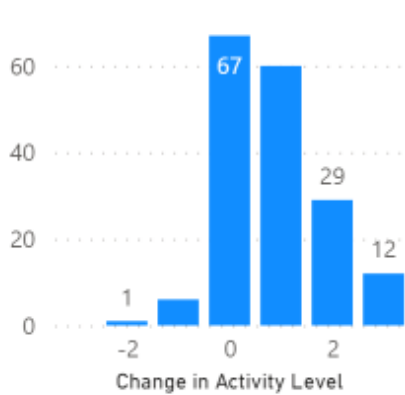
Wellbeing MYCaW Change (Reduction is good)



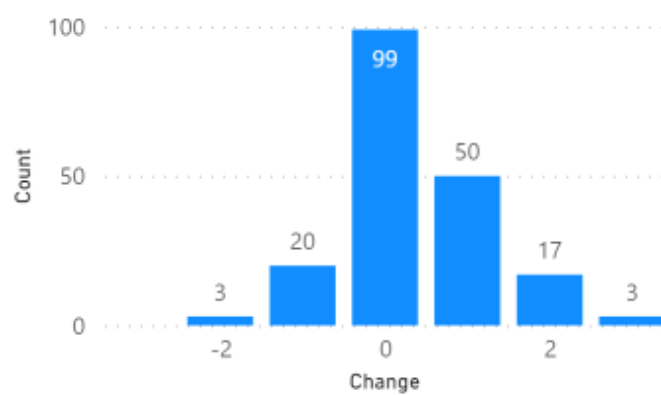
De Jong Gierveld Change (Reduction is good)



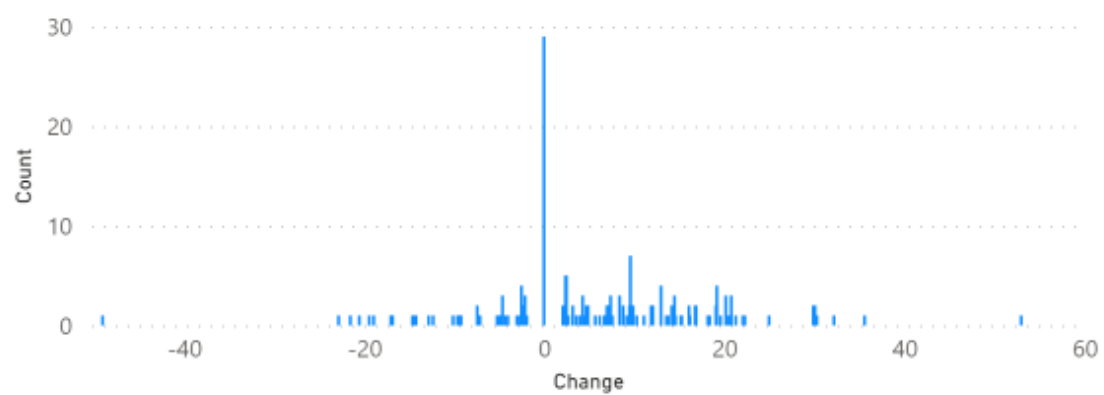
Physical Activity Change



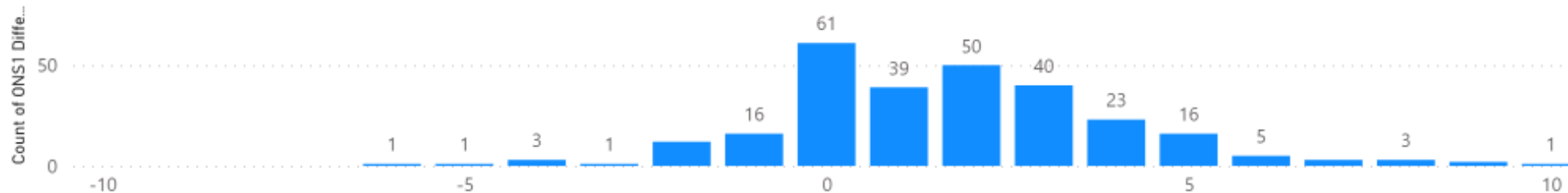
PAM Level Change (Increase is good)



PAM Score Change (Increase is good)



ONS 1 Change



Overall, how satisfied are you with your life nowadays?

(Increase is good)

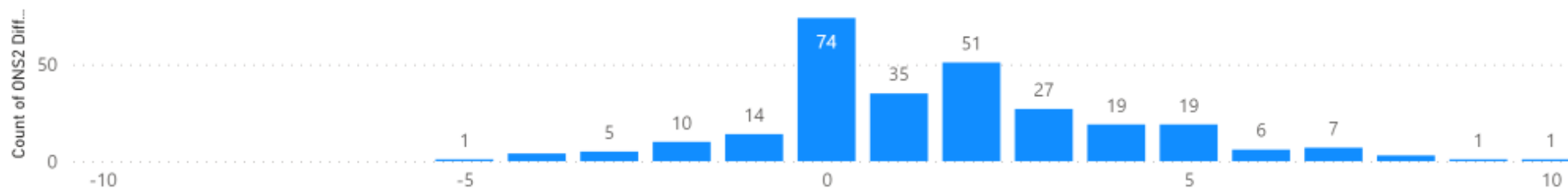
Baseline Da...

23/05/2017

07/02/2022



ONS 2 Change



Overall, to what extent do you feel that the things you do in your life are worthwhile?

(Increase is good)

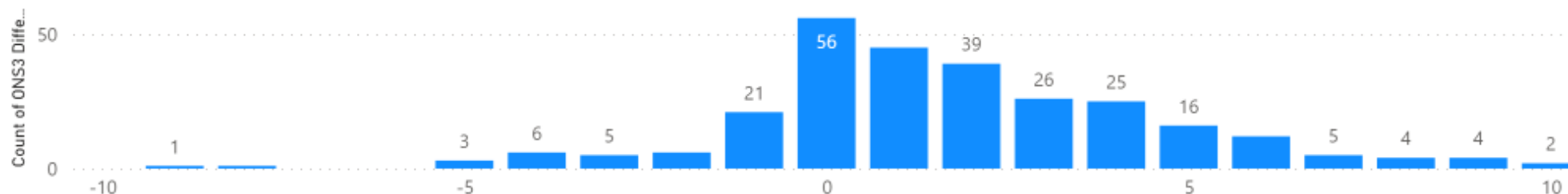
Age

- 10-19
- 20-29
- 30-39
- 40-49
- 50-59
- 60-69
- 70-79

Gender

- Female
- Male
- Unspecif...

ONS 3 Change



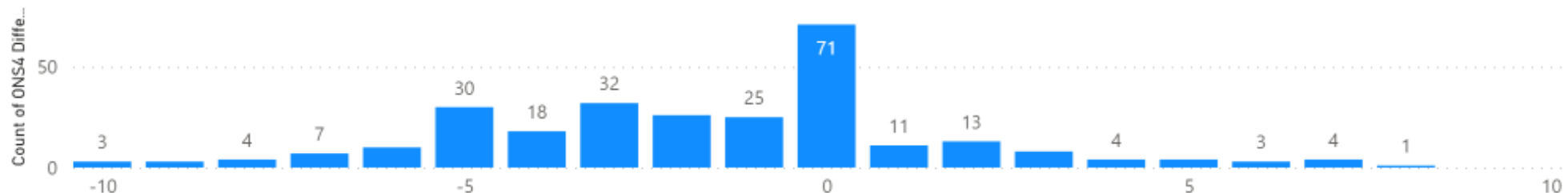
Overall, how happy did you feel yesterday?

(Increase is good)

PCN

- North
- Out of A...
- Shrewsb...
- South E...
- South W...

ONS 4 Change



On a scale where 0 is "not at all anxious" and 10 is "completely anxious", overall, how anxious did you feel yesterday?
(Decrease is good)

Practice

- Albright...
- Alveley ...
- Beeches ...
- Belvider...
- Bishops ...
- Bridgnor...
- Broselev...

Involvement

- Involvement is a cornerstone of all programme development. SHIPP is linked to the ICS involvement work and strategy development
- Workshops have been utilised over the last year to involve people and communities in our work, build relationships and bring together people from across the system to share best practice, knowledge and experience
- The work to date has resulted in a Memorandum of Understanding with the Voluntary and Community Sector, Principles of Involvement and a greater understanding of our communities. This work will support the to development a strategy for engaging with people and communities - a national requirement for Integrated Care Boards (ICBs)



Developing programmes

- Children and Young People
- Metrics - work is underway to develop a cohesive set of metrics that pulls together the relevant ICS priorities, Health and Wellbeing Board Priorities and SHIPP priorities

